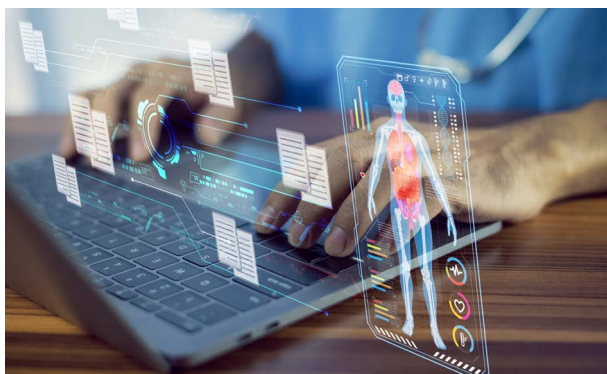


# OVERVIEW

Solving the long-standing evidence-practice gap associated with cardiac rehabilitation and secondary prevention of coronary heart disease (SOLVE-CHD) is a NHMRC Synergy Grant. Our multidisciplinary team is made up of researchers, clinicians with allied health, nursing, cardiology, public health, health economics and psychology backgrounds as well as consumer advisors.

SOLVE-CHD builds on previous and current efforts. In particular, the Australian Cardiac Rehabilitation Measurement Taskforce where there has been national consensus and development of quality indicators for cardiac rehabilitation. SOLVE-CHD will see delivery of interlinked service reform and research across 4 key activities.

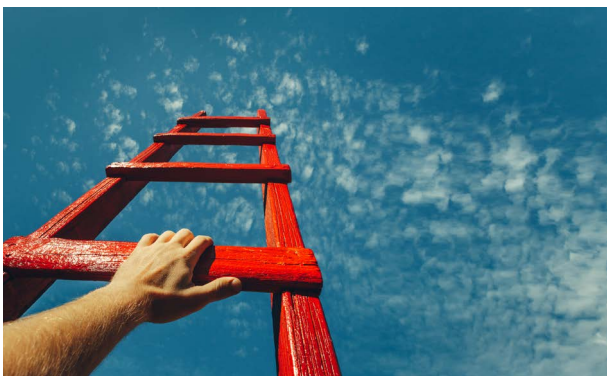
## TRANSFORMATIVE DATA & QUALITY



## NEW PROJECTS



## CAPACITY BUILDING



## THE NETWORK

